



● SH型组合填料 Type-SH combination of packing

SH型组合填料是由半软中心环与软性纤维丝或弹性丝组合而成。是一种适用范围广，能提高初期挂膜速度，具有一定的空隙可变、耐生物降解、耐冲击负荷等特点。特别在可生化性较差的有机污水使用上尤能显出其挂膜性能优良的特性，因此是深受广大用户欢迎的通用填料。

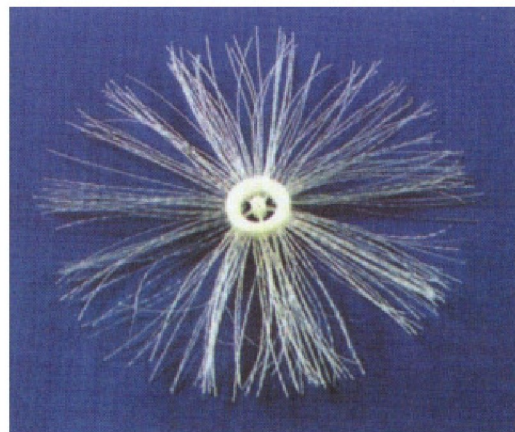
That the SH type constitutes a filling is soft from half the centre ring constitutes but is accomplished with soft cellosilk or elasticity wire. Be that one kind of applicability is broad, can improve initial stage bundle of film speed, have certain gap characteristics such as changeable, being able to bear living things degradation, being able to bear to pound load. Special the filling being applied or used universally being welcomed therefore very much by extensive consumer in the characteristic property may can manifest whose bundle of film high performance especially on organic relatively poor biochemistry foul water usage.

● 技术参数 Technical Parameters

填料规格 (mm) (填料直径 Φ × 间距)	成膜后重量 (kg/m ³)	比表面积 (m ² /m ³)
$\Phi 150 \times 60$	≈ 70	>200
$\Phi 150 \times 80$		
$\Phi 150 \times 100$		
$\Phi 180 \times 60$	≈ 60	>180
$\Phi 180 \times 80$		
$\Phi 180 \times 100$		
$\Phi 200 \times 60$	≈ 50	>150
$\Phi 200 \times 80$		
$\Phi 200 \times 100$		



软性纤维组合填料



弹性组合填料

● 使用安装与订购 Requirements for order

本填料可与各种形状支架配合安装使用，用户订购时说明哪种型号填料和直径 Φ mm、间距、有效长度及需要的数量m³即可。



When originally, the filling may fit with various form holder to assemble usage, the consumer orders, lmm, spacing, the effective length and the quantity m³ needing explaining that type filling and the diameter are OK.



● 用途 Applications

弹性立体填料材质选用聚烯烃类中的一种耐腐蚀、耐高温、耐老化的优质塑料及聚酰胺品种，并加以抗热氧、亲水、稳定、吸附等添加剂，利用专用设备，按严格的配比投料进行重新混合共聚，经高温溶化进行特殊的拉丝、丝条制毛、压制波纹等工艺，加工出多种既有一定刚性又有一定柔性和良好回弹性能的丝条，而后，采用特殊工艺，将丝条穿插固定在防腐、耐磨、高强度的中心绳上，丝条呈立体均匀排列的幅射状态，制成了悬挂式弹性立体填料的单体。

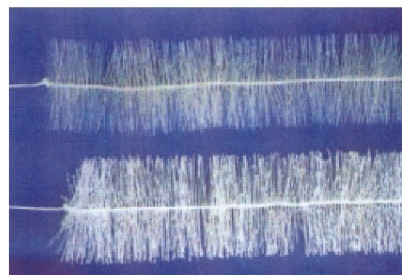
And elasticity body filling material quality one kind in selecting and using the polyolefin kind is able to bear corrosion, the thermostability, is able to bear aging high grade plastic and polyamide breed, give additives such as heat resistant oxygen, water loving, stability, adsorption, Make use of a rig, blend a copolymerization again according to being in progress than strict being qualified for throwing material, after high temperature handicrafts such as dissolving the system hair carrying out peculiar wiredrawing, silk, inhibiting cockles, process out various both have certain stiffness and have the certain flexibility sum is fine time elastic property the silk being able to adopt the peculiar handicraft later, silk deep thrust battle fixation is in be able to bear rotten, able to endure, on the high strength centre rope, silk assumes body equation at Tangement's monomer having shot a filling on state, manufacturing.



YDT弹性立体填料

● 技术参数 Technical Parameters

填料单元规格 直径 (Φ mm)	丝条直径 (mm)	比表面积 (m ² /m ³)	空隙率 (%)	成品重量 (kg/m ²)	挂膜重量 (kg/m ²)
Φ120	0.3~0.5	50~200	>98	3~5	50~90
Φ150					
Φ180					
Φ200					



● 特点 Features

该产品比表面积大，孔隙可变，材质比水轻，能在水中均匀张展，对气泡作多层密集性切割，提高了溶解氧的传递系数。由于丝条的特殊结构，因而挂膜后的比表面积成倍增大且挂膜、脱膜容易，生物膜活性强。可广泛应用于各类污水处理及自来水原水的微污染处理。本产品曾多次荣获国家级殊荣，颇受好评。

Be a product's turn than superficial area is big, the small opening is changeable, material quality has been lighter than water, can stretch homogeneously in the wave, has done multilayer concentrated cutting to air bubble, has improved the delivery modulus dissolving oxygen. Because of peculiar silk strip structure, as a result specific surface area of bundle of film queen enhances several times and bundle of film, is easy to take off a film, biomembrane activity is strong. But apply to sewage treatment of all kinds and running water raw water declining broadly contaminate treatment. Once many times, the product gains state-class laurel in glory, accepts favourable comment rather.

● 订货说明 Requirements for order

本填料根据水质浓度和出水要求可采用并列型或梅花型布置形式。填料在安装前先放入70℃~90℃的温水中浸泡片刻使丝条复原到自然平直状态后悬挂。填料要贮在室内，避免高温和阳光直接照射，以免影响产品的复原和使用寿命。订购本产品时须说明填料单元中Φmm，有效长度(m)，因该产品的制造工艺特别，故订购时尽可能提前订货。

The filling is based on water quality thickness and out water demanding to may adopt the type standing side by side or the plum blossom type to arrange a form. The filling suspends after soaking a moment in assembling front putting 70℃~90℃ warm water inside first makes silk recover to at ease flat state. The filling needs to hoard interior, avoid~ high temperature sum sunlight irradiating directly, to avoid affecting product recovery and life time. Must explain filling element Φmm, the effective length (m) when ordering this product, order goods as far as possible ahead of time when the manufacturing engineering because of that product is ordered special, old.

● 特点 Features

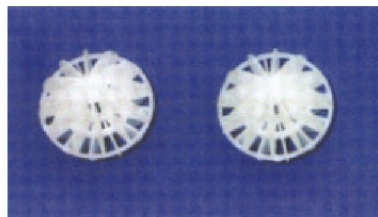
SH型球形填料具有孔隙可变和实用比表面积大等特点，且耐冲击负荷、充氧动力效率高。使用寿命长，因其直接投加，不需支架，因此在使用管理和安装维修上极为方便。

The SH type sphere filling has changeable and pragmatic specific surface area of small opening waiting for a characteristic greatly, is able to bear impingement load at present, charge oxygen driving force efficient. Life time is long, jump into a directly because of the person add, have no need of holder, go to the lavatory therefore extremely on using administration and installation to be maintained.

● 概述 Summarize

SH型球形系列填料系高分子聚合物一次性注塑成型，因其选用的材质比重为 $0.91\sim 0.97\text{g/cm}^3$ ，故在水体中既能悬浮又作移动，处于流化状态。是目前国内外环保界专家公认的一种节能型、高效率的生物载体。移动的生物膜比固定的生物膜显然在气液膜三相传质机理上有着量与质的进步，悬浮移动膜载体在水处理领域是发展的方向。该球形填料还可应用到各类化工反应塔、反应罐、硫化塔等工业塔器中。

The SH type sphere series filling is that the high polymer produces plastic articles by injection moulding for one time merely molding, specific gravity is $0.91\sim 0.97\text{g/cm}^3$ because of the material quality that the person selects and uses, therefore being in fluidization state in the wave now that energy suspension does displacement. Be that the environmental protection boundary expert is at present home and abroad universally accepted one kind energy conservation type, high efficiency living things carrier. Three question the biomembrane moving according to legend in gas liquid film are apparent than fixed biomembrane having amounts on mechanism and quality progress, suspension move film carrier direction being to develop in water treatment field. Be the sphere filling's turn to may apply to industry tower implement middle such as chemical industry reaction tower, reaction jar, vulcanization tower of all kinds.



SH型多面空心生物球



SH型弹性浮球填料



SH型旋转式浮球填料

● 技术参数 Technical Parameters

名称	项目	规格 (mm)	比表面积 (m^2/m^3)	孔隙率 (%)	比重 (g/cm^3)	堆积密度 个/ m^3 (理论数)	产品重量 (g/个)
SH型旋转式浮球填料		$\Phi 150$	≈ 280	95	0.93	560	100
SH型弹性浮球填料		$\Phi 150$	≈ 200	97	0.91	560	50
SH型多面空心生物球		$\Phi 150$	≈ 236	84	0.95	11500	10

● 填料投加量参考数 Reference number of filler dosage

数量 (反应池体积)	普通接触氧化池	水解调节池	好氧或厌氧流化床	好氧或厌氧生物塘	生物塔滤
%	15~30	10	40~50	7~10	50~70

● 订货说明 Requirements for order

SH型球形填料在安装时，首先在池体内用绳网将池隔为几个单元，然后离池底50cm用绳网拉紧，以免浮球填料随水，气流飘向一边或沉入池底。

安装本填料时，只需直接向池内投入10~70%浮球即可。

本填料中止使用时，切勿露天堆放，应浸泡于水中，以免因老化，脆化而影响使用寿命。

订购时须说明何种类型浮球填料，数量(个)即可。

Use rope net pool to is several elements across first within the pool body, be 50 cms away from and then the pool bottom using rope to cover tensioning as with a net when the SH type sphere filling is in installation, the ball filling floats to avoid floating with water, air current to one side or the submergence pool bottom.

Necessaries throws into 10~70 % directly to pool inner when assembling a filling, floating ball is OK.

The filling breaks off when being put into use, the air storage, should soak Yu Shui Zhong, to avoid affecting life time because of ageing, embrittlement by no means.

Order the time beard the ball filling, quantity explaining that what type floats are OK.