



● 用途 Applications

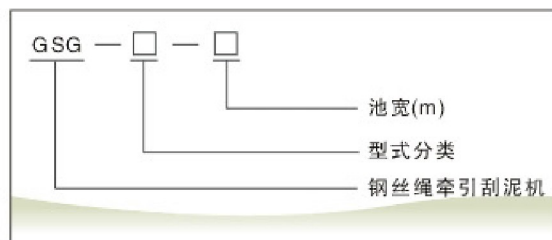
适用于平流式（矩形）沉淀池，隔油池等池底污泥及液面浮渣的刮集排除。

具有适用范围广、结构简单、操作方便、运行安全可靠、占用辅助面积少、自动化程度高等特点。

It is used to scrap the mud under the bottom of both horizontal (rectangular) sedimentation tanks and oil separation tanks as well as to scrape the scum.

It has several features as wide adaptation, simple structure, convenient and safe and reliable operation, takes less auxiliary space, automation is high and so on.

● 型号示例 Type and Its Indication



● 工作原理及构造 Working Principle and Strucure

该机按其运行位置及工艺结构分为三种类型。

A型：

由行走式刮泥车、卷筒、钢丝绳、行程控制机构、减速驱动机构、导向滑轮和张紧装置等部件组成。刮泥车由单钢丝绳在驱动机构通过卷筒，导向滑轮的传动和行程控制机构的作用，牵引其往返单向或双向刮泥。行程控制机构为梯形螺杆与卷筒同转，根据池长与卷筒所对应钢丝绳的卷数进行调整，可用于斜板（管）平流式沉淀池单池的刮泥。

B型：

由刮泥车、轨道、钢丝绳、导向轮、驱动绳轮、从动绳轮、张紧轮重锤、集油管、行程开关、撞块等部件组成。

刮泥机上部装有刮渣板在池面导轨上行走，采用摩擦轮传动钢丝绳牵引，两行程开关分别安装在池子两头，其工作原理与A型相同，适用于不设斜板（管），单列平流沉淀池的刮泥，并可同时对液面进行撇渣刮油。

C型：

结构基本与A型相同，其最大特点是由一台驱动卷扬装置通过双钢丝绳同时牵引两台刮泥车在池底交错往返运行，单向刮泥适用于斜板（管）平流沉淀池双池并列布置的刮泥。因此能耗省、占地少、运行更为平稳。

This machine can be divided into three types according to its operation location and art craft structure.

TYPE A:

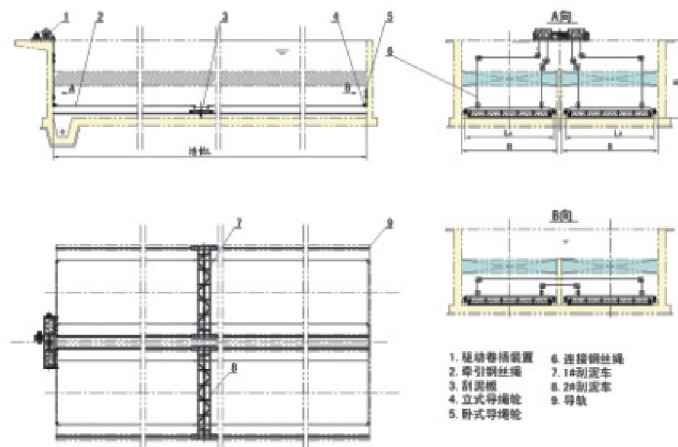
It is composed of running scraper, winding drums, rope, travel control mechanism, speed reducing and activating mechanism, guide sheave and tesioner and any other parts. The scraper driven by the rope, which works under the action of dump trucks and guide sheave and travel control mechanism scraps mud repeating on-way or two-way work. The travel control mechanism is trapezoidal screw rotating with the dump trucks at the same time and can be adjusted based on the length of the tank and winding drums' corresponding rope's number of the coil. This type machine can be used in the mud scraping of single horizontal sedimentation tanks with slopping plates or pipes.

TYPE B:

It is compose of scraper, winding drums, track, rope, guide wheel, driving rope sheave, driven rope sheave, tensioner, tensioner gravity, oil collection pipes, travel switch and link stopper and any other parts.

The scraper whose up part is with scum boards walks on the guide way set in the tank surfaces. It is driven by the friction wheel driving rope. Two travel switches are set separately in the tank's two ends. Its working principle is the same with type A. It can be used to scrap mud and oil for single horizontal sedimentation tanks without slopping plates or pipes.

TYPE C Its structure is basically similar to type A. The notable features of the machine is that two scrapers driven by two ropes of a driving and winding device work alternately on the bottom of the tank. On way scraper is suitable for the two paralleled settled horizontal sedimentation tanks with slopping plates or pipes. So the energy cost is lower, space taking is smaller, running is more steady.



GSG-C型钢丝绳牵引刮泥机

1. 驱动卷扬装置
2. 牵引钢丝绳
3. 刮泥板
4. 立式导绳轮
5. 卧式导绳轮
6. 连接钢丝绳
7. 1#刮泥车
8. 2#刮泥车
9. 导轨

● 技术性能参数 Technical Parameters

| 型 号 | 电机功率 (kW) | 行走速度 (m/min) | | 适用沉淀池尺寸(m) | |
|-------|--------------|-----------------|----------|------------|------|
| | | | | 最大长度 | 最大宽度 |
| GSG-A | 0.55 ~ 1.1 | 1 | | 40 | 10 |
| GSG-B | 0.55 ~ 1.1 | | | | |
| GSG-C | 0.75 ~ 1.5 | 定速型 | 1 | 25 | 6 |
| | | 调速型 | 0.4~1.35 | | |



传动装置



刮泥小车