

● 用途 Applications

转刷曝气机主要用于氧化沟的曝气，对污水进行充氧。刷片由碳钢或不锈钢材料制成，具有曝气、水平推流及混合等作用，是理想的曝气设备。

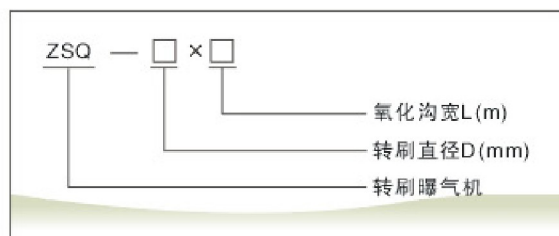
The Aerator with rotating brushes is mainly used for the sewage's aeration in oxidation ditch. The brushes are made of carbon steel or stainless steel. The aerator has many functions such as aerating, horizontally propelling, and mixing and so on, and is an ideal aerating device.

● 工作原理及构造 Working Principle and Structure

主轴上均匀布置着刷片，转刷在驱动装置的传动下旋转，刷片与水接触，将水抛入空中，形成水跃，充分与空气接触，空气迅速溶入水中，完成充氧过程。同时刷片对水的推流作用确保池底有0.15~0.3m/s的流速，使活性污泥处于悬浮迁移状态，与进水混合良好。

Evenly distributed on the main shaft, the brushes rotate with the transmission device, touch the water, throw it to air, and contact air completely after it becomes water jumps, then the air dissolves quickly in the water, and the aeration is finished. At the same time, the push force exerted by the brush to water ensure 0.15~0.3m/s flowing speed on the bottom of the pool to make activated mud suspend and mix with water better.

● 型号示例 Type and Its Indication



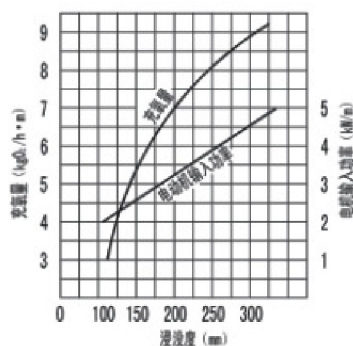
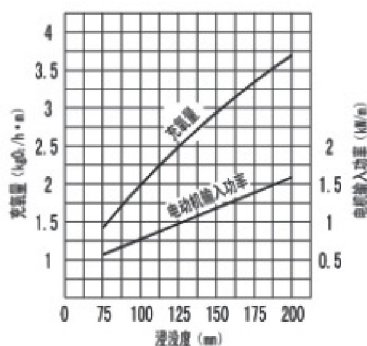
● 特点 Features

1. 采用专用机构及调心轴承，自动保持轴及刷片的平稳运行。
 2. 刷片采用不锈钢或碳钢镀锌材料，耐腐蚀，寿命长。
 3. 安装维护方便，投资小，动力效率高。
 4. 可根据氧化沟宽度灵活布置，并可根据溶解氧自动控制运行。
1. Adopts specific mechanism and adjustment bearings to keep automatically the stable operation of the shaft and the brushes.
 2. The brushes are made of stainless steel or galvanized carbon steel, resist corrosion and have a long service life.
 3. Easy and simple to install and maintain, low investment, high power efficiency.
 4. Can be installed according to the width of the oxidation ditch, and can be run automatically along with the dissolving degree of oxygen in the water.

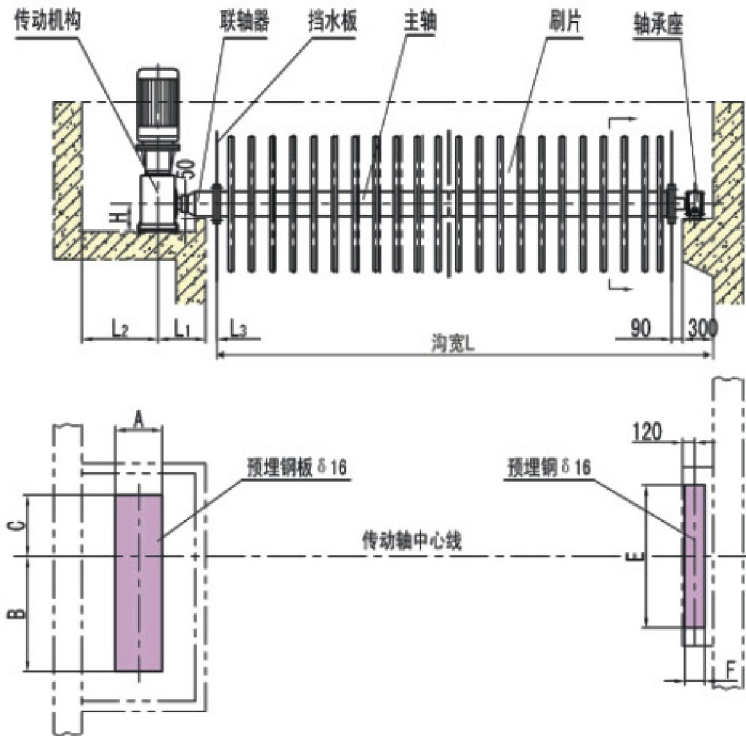
● 技术性能参数及外形尺寸表 Technical Parameters Shape and Size

型号	参数	刷体直径 D(mm)	转速 (r/min)	功率 (kW)	浸没深度 G(mm)	充氧能力 (kgO ₂ /h)	动力效率 (kgO ₂ /kW·h)
ZSQ700 × 3		Φ 700	71	7.5	≤ 240	12	1.8~2.8
ZSQ700 × 4.5		Φ 700	74	11		17	1.8~2.8
ZSQ700 × 6		Φ 700	77	15		23	1.8~2.8
ZSQ1000 × 3		Φ 1000	77	15	≤ 300	24	1.8~2.8
ZSQ1000 × 4.5		Φ 1000	74	22		34	1.8~2.8
ZSQ1000 × 6		Φ 1000	74	30		48	1.8~2.8
ZSQ1000 × 7.5		Φ 1000	74	37		60	1.8~2.8
ZSQ1000 × 9		Φ 1000	70	45		74	1.8~2.8

● 充氧量曲线图 Technical Performance Figure



● 外形与安装尺寸表 Shape and Size



(mm)

型号	参数	L1	L2	L3	H	A	B	C	E	F
ZSQ700 × 3		160	640	46	112	220	300	200	400	200
ZSQ700 × 4.5		175	625	65	132	225	330	250	400	200
ZSQ700 × 6		225	575	66	160	350	410	280	400	200
ZSQ1000 × 3		225	775	66	160	350	410	280	550	200
ZSQ1000 × 4.5		270	730	77	200	440	460	330	550	200
ZSQ1000 × 6		270	730	77	200	440	460	330	550	200
ZSQ1000 × 7.5		270	730	77	200	440	460	330	550	200
ZSQ1000 × 9		300	700	118	225	500	500	350	550	200

● 订货说明 Requirements for Order

1. 订货时注明沟宽,刷片的材质(碳钢或不锈钢)。
2. 如需要整体式的防溅罩(玻璃钢)时,请注明。
3. 如需在池内配套导流板时,请注明。
4. 本机传动机构一般为立式减速箱,需要卧式结构时或需要双速电机时,请注明。
5. 本机充氧量为清水试验数据,当用于污水时,充氧量可能因水质差异而不同,选取时请增加一定的余量。

1. When placing an order, please note width of the tank and material for the brushes (carbon steel or stainless steel).
2. When the integrated splash prevention cover made of GRP is in need, please note.
3. When the diversion plate needs to be added to the tank, note that.
4. Usually the transmission mechanism of the Aerator is a vertical decelerator, when a horizontal one is in need, note that.
5. The quantity of oxygen is gained after being tested on clear water; the data may vary when the water changes into waste water, so raise it to a certain degree when ordering the Aerator.