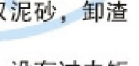




TYPE-SG WIPE ROPE DRAWING GRATE CLEANER

适用深度较深的渠, 栅隙较大(一般为20~100mm, 即粗格栅), 渠宽不大于4m的场合, 大于4m的渠宽可用移动式格栅或移动式抓斗, 可适应介质为含泥沙的污水。

● 特点 Features

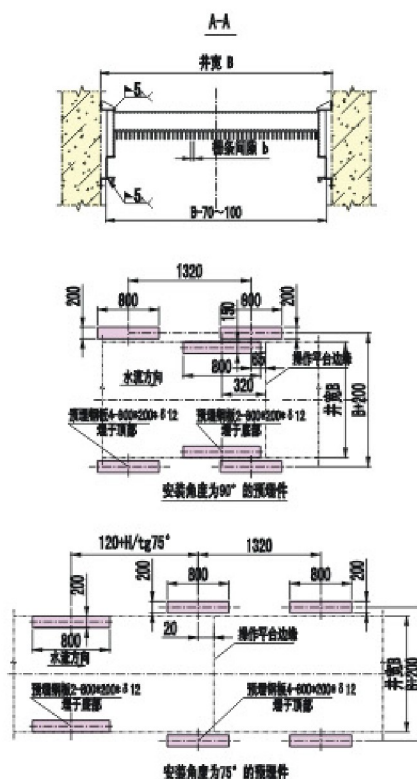
- 
1. 适用范围广，宽度可达4m,最大深度可达30m。
 2. 捞渣量大（可达300kg/次以上），甚至可捞取泥砂，卸渣效率高，效果好。
 3. 易损件少，水下无运转部件，维护检修方便；设有过力矩保护，运行安全可靠。
 4. 格栅的运行控制根据设定的时间间隔运行（每天至少一个工作循环），也可根据栅前后水位差自动控制。
1. Wide range in application, width can be 4 meters and the max depth can be 30 meters.
 2. Big dregs catching capacity (over 300kg every time), even it can catch mud and sand, high efficiency and good effect in dregs unloading.
 3. Less worn-out parts and no underwater operating components. Convenient in maintenance and inspection, reliable and safe in operation with over torque protection.
 4. Operation control of grate will be at intervals, performed according to the settled time and kept at least one operating cycle per day. Also pressure head between fore and after grate control can perform.

SG — $\square \times \square$

井深H (m)

井宽B (m)

钢丝绳牵引式格栅除污机



● 技术性能 Technical Parameters

规格型号	井宽B (m)	栅条间隙b (mm)	提升功率 (kW)	张耙功率 (kW)	过栅流速 (m/s)	卸渣高度 (mm)
SG1.5	1.5	15、20 25、30 40、50 60、70 80、90 100	1.5	0.37	≤1	750 (1000)
SG2.0	2.0		2.2	0.55		
SG2.5	2.5		2.2	0.75		
SG3.0	3.0		3.0	0.75		
SG3.5	3.5		4.0	1.1		
SG4.0	4.0		4.0	1.1		

注：1.过水面有效率对应栅隙约70%~85%。
2.表中功率对应井深10m，超过10m时，功率须加大。
3.安装角度α一般为75°或90°。

● 订货说明 Requirements for Order

1. 注明设备的型号、井宽、井深、栅条高度和栅条间隙、安装角度等参数，不注明栅前水深表示栅条高按2米订货。
2. 电控箱、液位仪、螺旋压榨机、无轴螺旋输送机和渣车等配套设备应另订，并应注明是液位差控制还是时间控制，或两者同时控制。
3. 不注明设备材质和防腐要求，表示按碳钢普通防腐订货。
4. 设备的安装角度，一般为75°或90°，其它角度特殊订货。
5. 机架与侧壁固定方式有膨胀螺栓和预埋钢板固定两种（B≥1.5m时要求用预埋钢板固定），若采用预埋钢板固定，应提供预埋钢板标高及尺寸，我公司可提供详细预埋件图。

1. Detailed note parameters such as specification, width and depth of canal, height of grizzly bars and interval between grizzly bars, the setting angle and so on. It is considered the height of grizzly bars is 2m for order without notice the depth of water before grid.
2. Electric cabinet, level-meter, screw press, no shaft screw conveyor and slag car should be ordered extra. Note pressure head control or time or both of them when order.
3. It is generally considered the material is carbon steel and anti-corrosion is ordinal without special notice.
4. Note the setting angle, generally 75° or 90°. Other setting angle should be ordered specially.
5. The fixed forms between framework and sidewall are classed to expansion bolt fixation and embedded steel board fixation (It is required pre-embedded steel board to fix the machine when the parameter B is equal to or more than 1.5m). If the pre-embedded steel board is needed, please provide the elevation and size. We can provide the detail drawing for the pre-embedded part.

